



#28 BLUES練習2025②

©KAI ICHIKAWA

A

♩ = 124

G7 C7 G7 G7

6 C7 C#dim G7 Bm7 E7

10 Am7 D7 G7 E7 Am7 D7

B

14 G7 C7 G7 G7

18 C7 C#dim7 G7 Bm7 E7

22 Am7 D7 G7 E7 Am7 D7

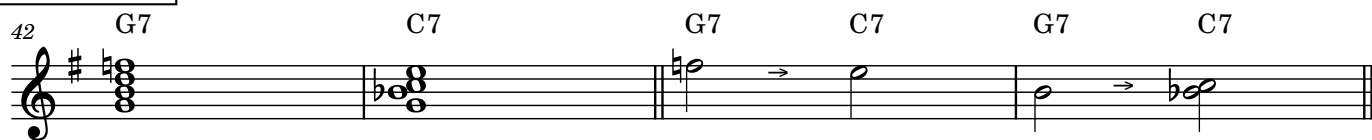
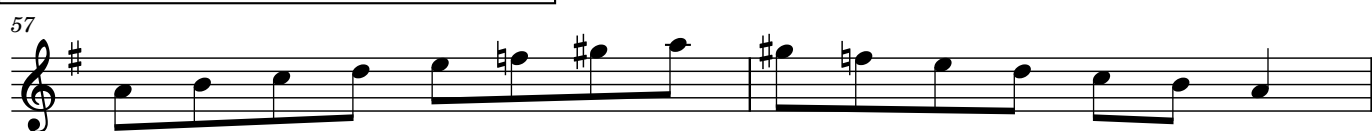
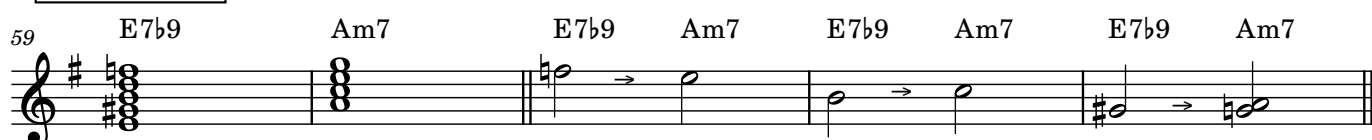
C

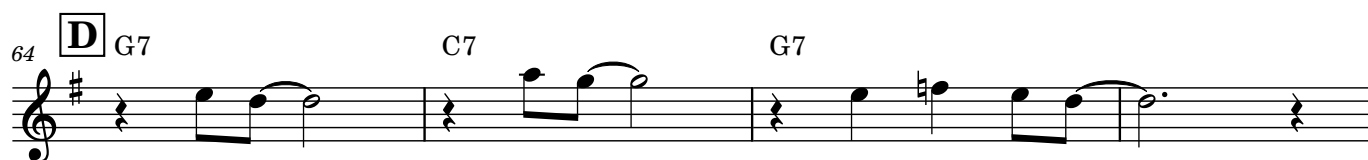
26 G7 C7 G7 G7

30 C7 C#dim7 G7 Bm7 E7

34 Am7 D7 G7 E7 Am7 D7

2

G7→C7**半音の動き****E7→Am7****Aハーモニックマイナースケール****半音の動き**



変化をつける

