



# BLUES練習2025①

©KAI ICHIKAWA

**A** F7 B $\flat$ 7 F7

5 B $\flat$ 7 Bdim F7 Am7 D7

9 Gm7 C7 F7 D7 Gm7 C7

**B** F7 B $\flat$ 7 F7

17 B $\flat$ 7 Bdim F7 Am7 D7

21 Gm7 C7 F7 D7 Gm7 C7

**C** F7 B $\flat$ 7 F7

29 B $\flat$ 7 Bdim F7 Am7 D7

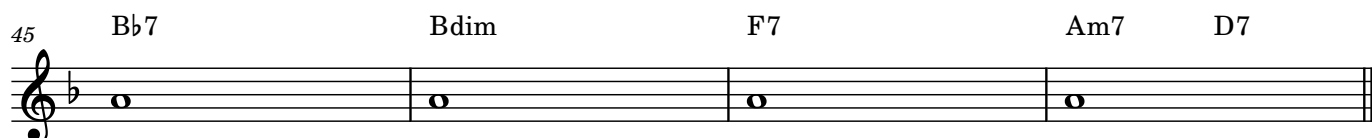
33 Gm7 C7 F7 D7 Gm7 C7

2

37 **D** Fメジャーペンタ Fマイナーペンタ Fメジャーブルーススケール Fマイナーブルーススケール



全部ラで演奏すると

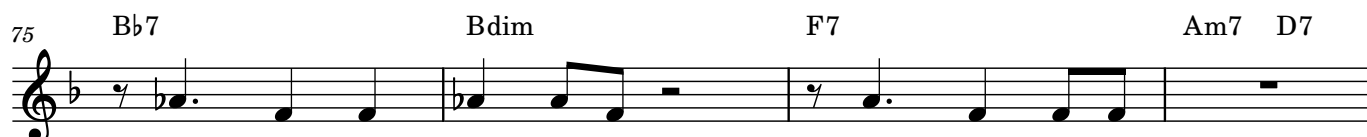
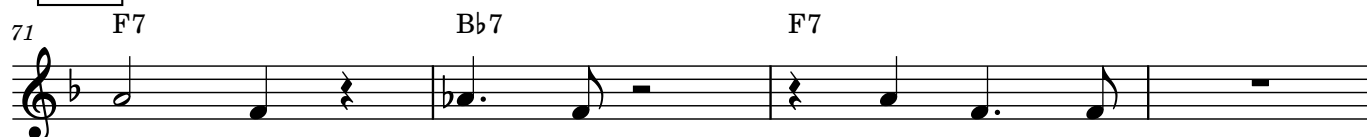
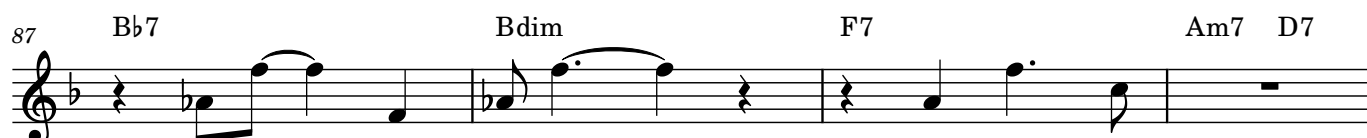
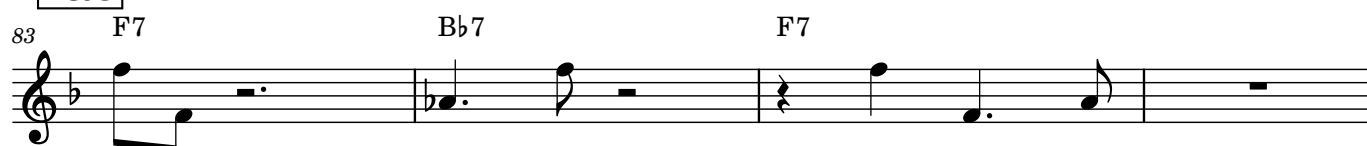



全部ラbで演奏すると



整理すると



**1&3****1&3**

104 

## マイナーBS

Measures 116-120 of the score. Measure 116: Treble clef, key signature of one flat (Bb), Gm7 chord, notes Bb4, D5, F5, G5. Measure 117: Treble clef, key signature of one flat, C7 chord, notes G4, A4, Bb4, C5, D5, E5, F5, G5. Measure 118: Treble clef, key signature of one flat, F7 chord, notes C5, D5, E5, F5, G5, A5, Bb5, C6. Measure 119: Treble clef, key signature of one flat, D7 chord, notes E5, F5, G5, A5, Bb5, C6, D6. Measure 120: Treble clef, key signature of one flat, Gm7 chord, notes Bb4, D5, F5, G5, C7 chord, notes G4, A4, Bb4, C5, D5, E5, F5, G5.

## メジャー&マイナーBS

124 Bb7 Bdim 3 F7 Am7 D7

The musical notation for measures 124-128 is as follows:

- Measure 124: Treble clef, key signature of one flat (Bb). Chord Bb7. Notes: whole rest, quarter note Bb, quarter note Ab, quarter note Gb.
- Measure 125: Chord Bdim. Notes: quarter note Bb, quarter note Ab, quarter note Gb.
- Measure 126: Chord Bdim. Notes: quarter note Bb, quarter note Ab, quarter note Gb.
- Measure 127: Chord F7. Notes: quarter note F, quarter note Eb, quarter note D, quarter note C.
- Measure 128: Chord Am7. Notes: quarter note A, quarter note G, quarter note F, quarter note E.

128 Gm7 C7 F7 D7 Gm7 3 C7