



いきなり振られたソロどうする？

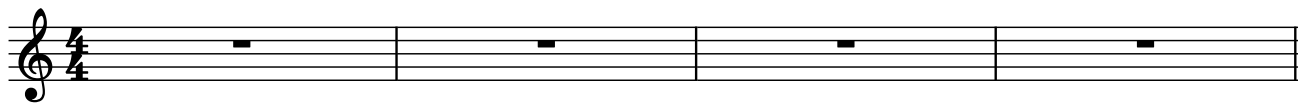
©KAI ICHIKAWA

A ♪ = 90
G9sus

B♭9sus

G9sus

E7



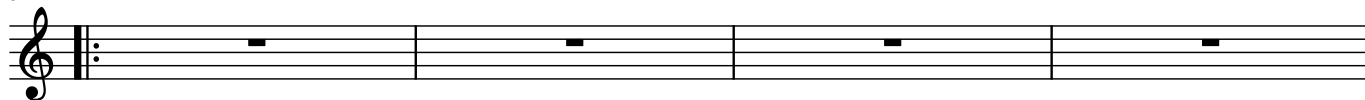
B

5 Am7

D7

Am7

D7

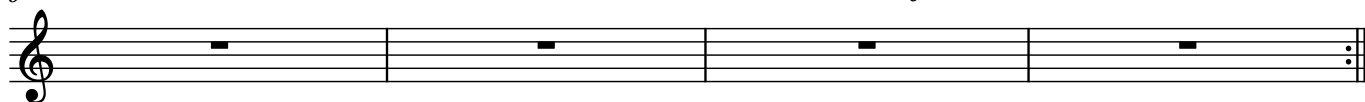


9 Am7

D7

Dm7 Em7 Fmaj7 F#m7b5 G9sus

E7



susコード

13 G9sus

Dm7/G

B♭9sus

Fm7/B♭



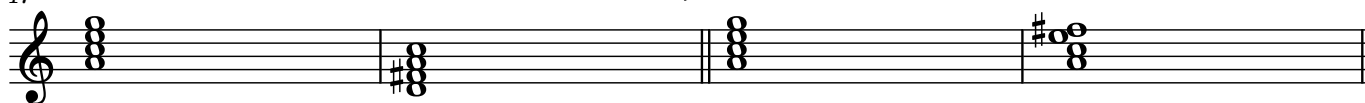
II-Vの捉え方のアイデア

17 Am7

D7

→ Am7

Am6



A

21 G9sus

B♭9sus

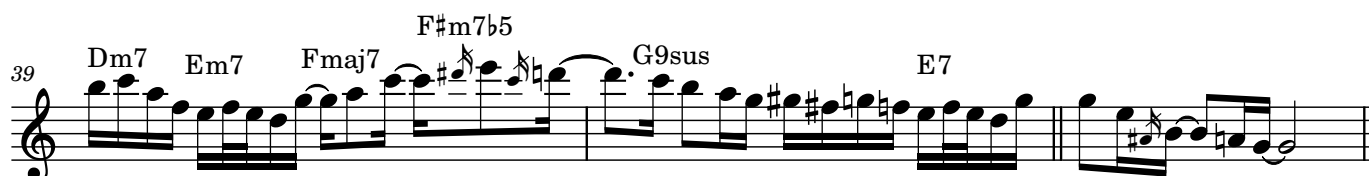


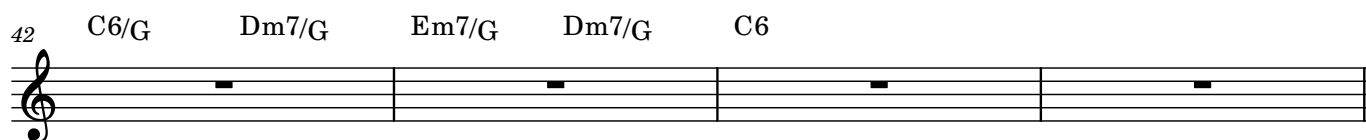
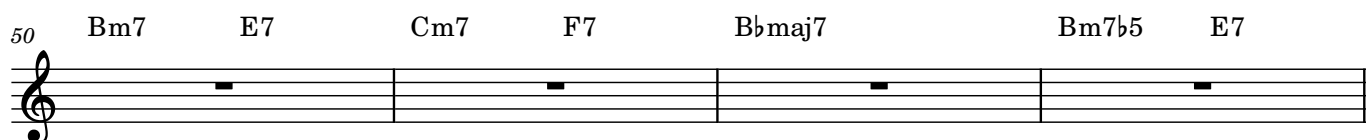
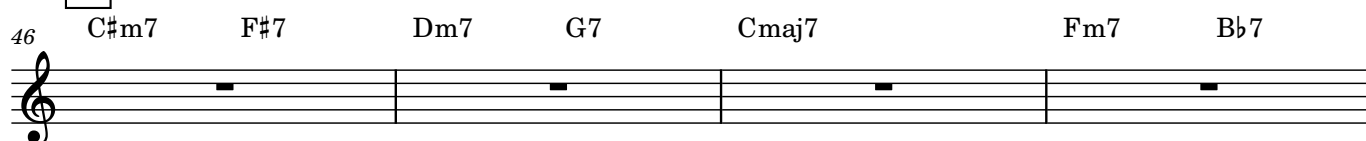
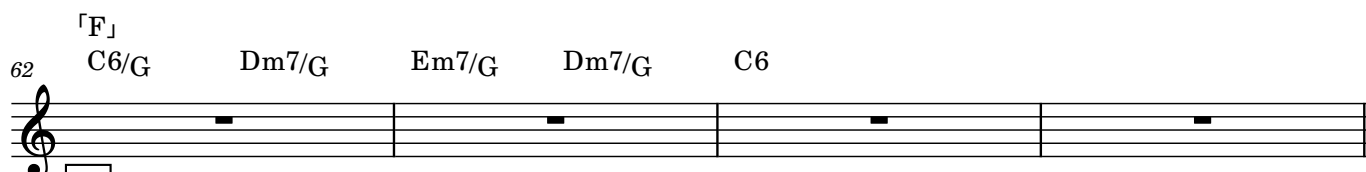
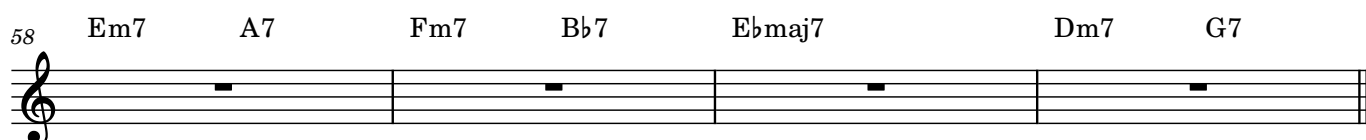
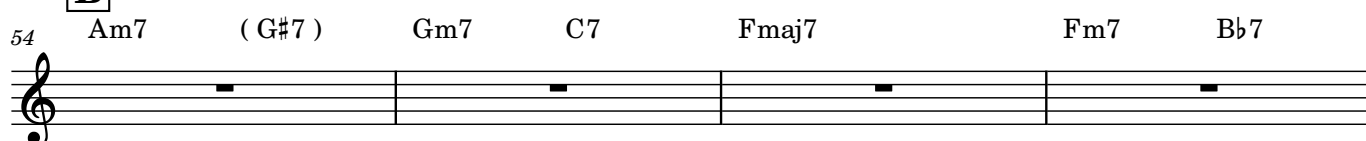
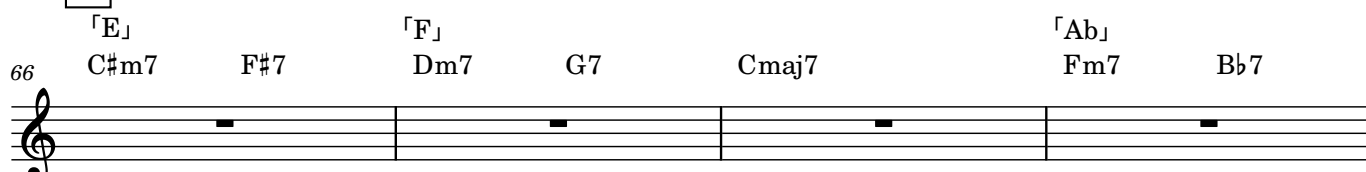
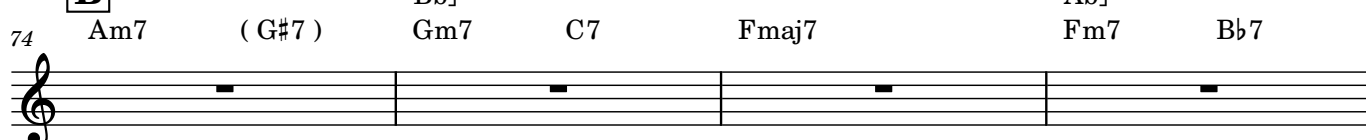
23 G9sus

E7



2

B1**B2**

**A****B****A****B**

どうする？

最後の音の半音上に着地

続けてみる

半音上に着地(例)

終わりの音以外でも...

[illegible]

$\text{♩} = 180$

110 C6/G Dm7/G Em7/G Dm7/G C6

A1

114 C#m7 F#7 Dm7 G7 Cmaj7 Fm7 Bb7

118 Bm7 E7 Cm7 F7 Bbmaj7 Bm7b5 E7

B

122 Am7 (G#7) Gm7 C7 Fmaj7 Fm7 Bb7

126 Em7 A7 Fm7 Bb7 Ebmaj7 Dm7 G7

A2

130 C#m7 F#7 Dm7 G7 Cmaj7 Fm7 Bb7

134 Bm7 E7 Cm7 F7 Bbmaj7 Bm7b5 E7

C

138 Am7 (G#7) Gm7 C7 Fmaj7 Fm7 Bb7

142 Em7 A7 Dm7 G7 C6/G Dm7/G

146 Em7/G Dm7/G C6/G Dm7/G Em7/G Dm7/G

150 C6 C#m7 F#7 Dm7 G7