

# 歌伴のコツ

©KAI ICHIKAWA

♩ = 160  
F7

E7

Am

**A**

5

Dm7

G7

Cmaj7

Fmaj7

9

Bm7b5

E7

Am

**B**

13

Dm7

G7

Cmaj7

Fmaj7

17

Bm7b5

E7

Am

**C**

21

Bm7b5

E7

Am

25

Dm7

G7

Cmaj7

Fmaj7

**D**

29

Bm7b5

E7

Am7

Ab7

Gm7

F#7

33

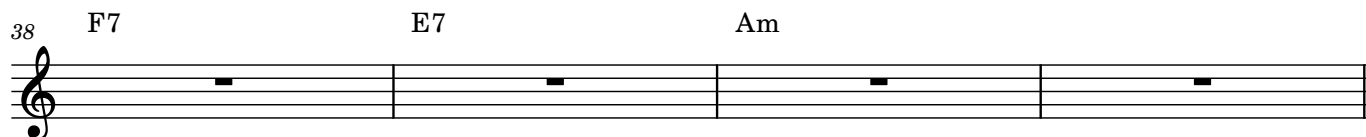
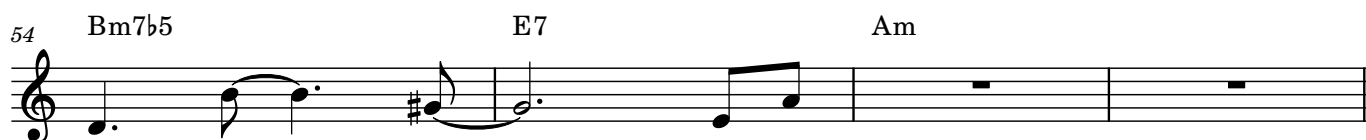
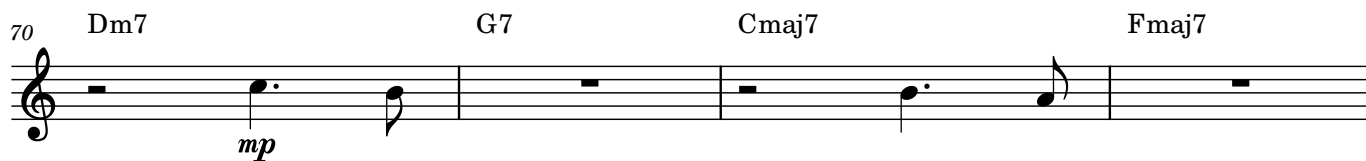
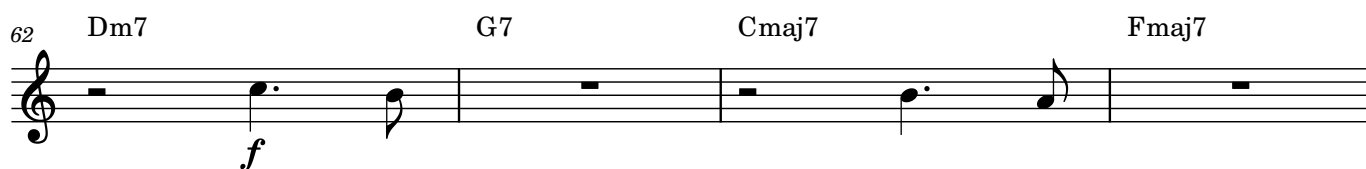
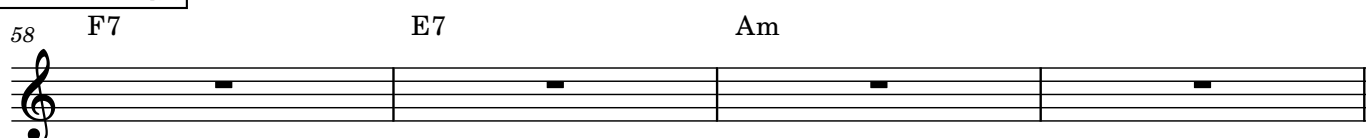
F7

E7

Am

3

2

**A2****B2****手法の比較**

# 手法の比較2

78 F7 E7 Am

82 Dm7 G7 Cmaj7 Fmaj7

86 Bm7b5 E7 Am

90 Dm7 G7 Cmaj7 Fmaj7

94 Bm7b5 E7 Am

# 手法の比較3

98 F7 E7 Am

102 Dm7 G7 Cmaj7 Fmaj7

106 Bm7b5 E7 Am

110 Dm7 G7 Cmaj7 Fmaj7

114 Bm7b5 E7 Am

**A**

118 Dm7 G7 Cmaj7 Fmaj7

the fall-ing leaves drift by the win-dow the au-tumn lea-

123 Bm7b5 E7 Am

-ves of red and gold

### 下がる形

127 Dm7 sax G7 vo Cmaj7 sax Fmaj7 vo

leaves drift by the win-dow the au-tumn lea-

131 Bm7b5 sax E7 vo Am

-ves of red and gold

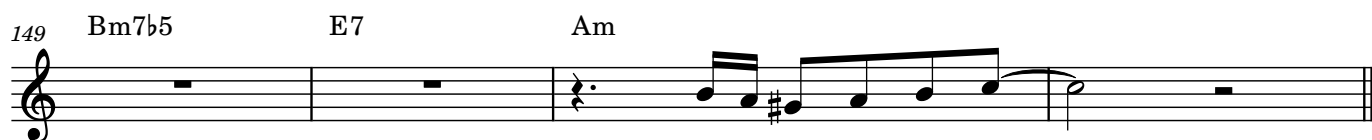
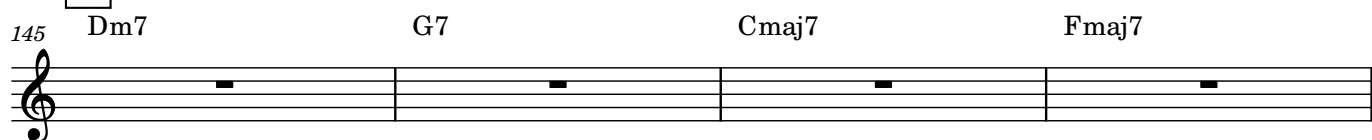
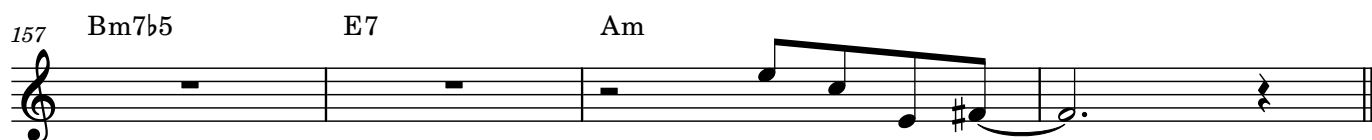
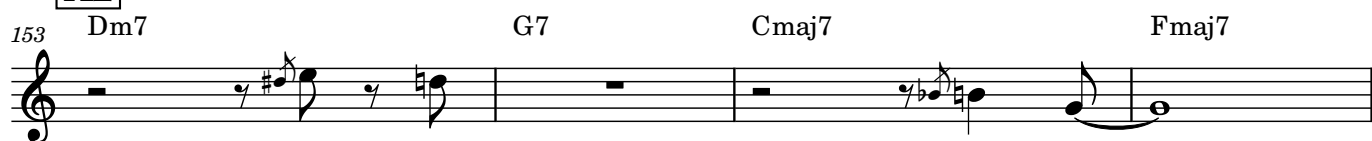
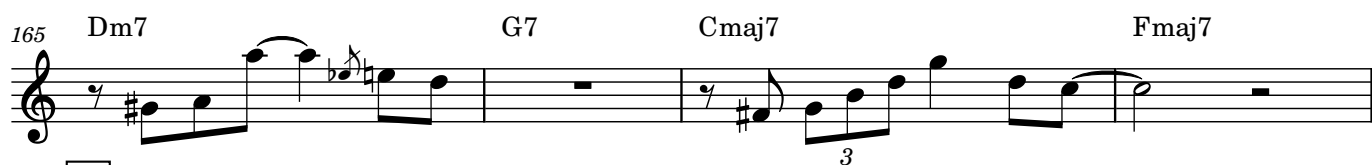
### 上がる形を混ぜる

135 Dm7 sax G7 vo Cmaj7 sax Fmaj7 vo

leaves drift by the win-dow the au-tumn lea-

139 Bm7b5 sax E7 vo Am

-ves of red and gold

**A****A2****B****C**