



セブンスコード練習②

©KAI ICHIKAWA

Sheet music for the first system, measures 1-8. The key signature is B-flat major (two flats). The time signature is 4/4. The notes are: Bb (1), Bb (2), Bb (3), Bb (4), Bb (5), Bb (6), Bb (7), Bb (8), Bb (9), Bb (10), Bb (11), Bb (12), Bb (13), Bb (14), Bb (15), Bb (16), Bb (17), Bb (18), Bb (19), Bb (20), Bb (21), Bb (22), Bb (23), Bb (24), Bb (25), Bb (26), Bb (27), Bb (28), Bb (29), Bb (30), Bb (31), Bb (32), Bb (33), Bb (34), Bb (35), Bb (36), Bb (37), Bb (38), Bb (39), Bb (40), Bb (41), Bb (42), Bb (43), Bb (44), Bb (45), Bb (46), Bb (47), Bb (48), Bb (49), Bb (50), Bb (51), Bb (52), Bb (53), Bb (54), Bb (55), Bb (56), Bb (57), Bb (58), Bb (59), Bb (60), Bb (61), Bb (62), Bb (63), Bb (64), Bb (65), Bb (66), Bb (67), Bb (68), Bb (69), Bb (70), Bb (71), Bb (72), Bb (73), Bb (74), Bb (75), Bb (76), Bb (77), Bb (78), Bb (79), Bb (80), Bb (81), Bb (82), Bb (83), Bb (84), Bb (85), Bb (86), Bb (87), Bb (88), Bb (89), Bb (90), Bb (91), Bb (92), Bb (93), Bb (94), Bb (95), Bb (96), Bb (97), Bb (98), Bb (99), Bb (100).

Chords: Bbmaj7, G7, Cm7, F7, Dm7, G7, Cm7, F7.

Measure 5 starts with a 5-measure rest.

分析(1)

Sheet music for the second system, measures 9-16. The key signature is B-flat major. The notes are: Bb (1), Bb (2), Bb (3), Bb (4), Bb (5), Bb (6), Bb (7), Bb (8), Bb (9), Bb (10), Bb (11), Bb (12), Bb (13), Bb (14), Bb (15), Bb (16), Bb (17), Bb (18), Bb (19), Bb (20), Bb (21), Bb (22), Bb (23), Bb (24), Bb (25), Bb (26), Bb (27), Bb (28), Bb (29), Bb (30), Bb (31), Bb (32), Bb (33), Bb (34), Bb (35), Bb (36), Bb (37), Bb (38), Bb (39), Bb (40), Bb (41), Bb (42), Bb (43), Bb (44), Bb (45), Bb (46), Bb (47), Bb (48), Bb (49), Bb (50), Bb (51), Bb (52), Bb (53), Bb (54), Bb (55), Bb (56), Bb (57), Bb (58), Bb (59), Bb (60), Bb (61), Bb (62), Bb (63), Bb (64), Bb (65), Bb (66), Bb (67), Bb (68), Bb (69), Bb (70), Bb (71), Bb (72), Bb (73), Bb (74), Bb (75), Bb (76), Bb (77), Bb (78), Bb (79), Bb (80), Bb (81), Bb (82), Bb (83), Bb (84), Bb (85), Bb (86), Bb (87), Bb (88), Bb (89), Bb (90), Bb (91), Bb (92), Bb (93), Bb (94), Bb (95), Bb (96), Bb (97), Bb (98), Bb (99), Bb (100).

Chords: Bbmaj7, G7, Cm7, F7, Dm7, G7, Cm7, F7.

Measure 9 starts with a 9-measure rest.

分析(2)

Sheet music for the third system, measures 17-20. The key signature is B-flat major. The notes are: Bb (1), Bb (2), Bb (3), Bb (4), Bb (5), Bb (6), Bb (7), Bb (8), Bb (9), Bb (10), Bb (11), Bb (12), Bb (13), Bb (14), Bb (15), Bb (16), Bb (17), Bb (18), Bb (19), Bb (20), Bb (21), Bb (22), Bb (23), Bb (24), Bb (25), Bb (26), Bb (27), Bb (28), Bb (29), Bb (30), Bb (31), Bb (32), Bb (33), Bb (34), Bb (35), Bb (36), Bb (37), Bb (38), Bb (39), Bb (40), Bb (41), Bb (42), Bb (43), Bb (44), Bb (45), Bb (46), Bb (47), Bb (48), Bb (49), Bb (50), Bb (51), Bb (52), Bb (53), Bb (54), Bb (55), Bb (56), Bb (57), Bb (58), Bb (59), Bb (60), Bb (61), Bb (62), Bb (63), Bb (64), Bb (65), Bb (66), Bb (67), Bb (68), Bb (69), Bb (70), Bb (71), Bb (72), Bb (73), Bb (74), Bb (75), Bb (76), Bb (77), Bb (78), Bb (79), Bb (80), Bb (81), Bb (82), Bb (83), Bb (84), Bb (85), Bb (86), Bb (87), Bb (88), Bb (89), Bb (90), Bb (91), Bb (92), Bb (93), Bb (94), Bb (95), Bb (96), Bb (97), Bb (98), Bb (99), Bb (100).

Chords: Bbmaj7, G7, Cm7, F7, Dm7(Cmaj7), G7, Cm7, F7.

Measure 17 starts with a 17-measure rest.

分析(3)

21 B♭maj7 G7 Cm7 F7

23 Dm7 G7 Cm7 F7

Analysis (3) shows two staves of music. The first staff (measures 21-24) contains the chords B♭maj7, G7, Cm7, and F7. The second staff (measures 23-26) contains the chords Dm7, G7, Cm7, and F7. Arrows indicate specific notes or intervals within the chords.

分析(4)

25 B♭maj7 G7 Cm7 F7

27 Dm7 G7 Cm7 F7

Analysis (4) shows two staves of music. The first staff (measures 25-28) contains the chords B♭maj7, G7, Cm7, and F7. The second staff (measures 27-30) contains the chords Dm7, G7, Cm7, and F7. Arrows indicate specific notes or intervals within the chords.

よく使うセブンスコードと型

29 B♭maj7 B♭maj7 B♭maj7

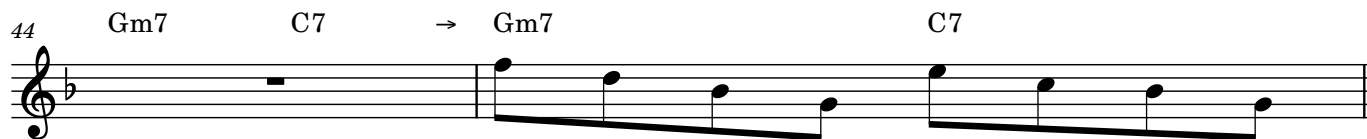
33 Cm7 Dm7 D♭m7 Cm7 F7 B♭maj7

37 F7 Cm7 F7 B♭maj7

41 Em7♭5 Em7♭5 A7♭9 Dm

This section displays various seventh chords and patterns. The first staff (measures 29-32) shows B♭maj7. The second staff (measures 33-36) shows Cm7, Dm7, D♭m7, Cm7, F7, and B♭maj7. The third staff (measures 37-40) shows F7, Cm7, F7, and B♭maj7. The fourth staff (measures 41-44) shows Em7♭5, Em7♭5, A7♭9, and Dm. Triplet markings (3) are present under some notes.

ショート2-5に使う



Confirmation

